



dotfmp.berlin

The event handbook^{v18}

The 6W

What

dotfmp is set up as a kind of “playground” to test yourself and fellow developers! Its a 3 Day-Unconference, Meetup, Hangout or Barcamp to talk about all things FileMaker. It is an informal and self-organized effort to meet on a personal basis.

Who

dotfmp is an effort of various European FileMaker developers. It is meant to bring all kinds of skilful developers together to share knowledge, to learn and challenge each other.

When

dotfmp started in 2013 and since then has taken place every year, in the first week of June. In 2018, we will begin on 6 June with a late-afternoon, relaxed “Beer and Sausages” session in one of Berlin’s most famous beer garden. The dotfmp sessions will run from 7 to 9 June, 09.00 to 18.00, with social events in the evenings.

Where

dotfmp takes place at the GLS Campus, in Prenzlauer Berg, one of the most famous spots in Berlin. It is the historical scene of the Berlin revolution of 1989 and nowadays a vibrant area with plenty of famous restaurants.

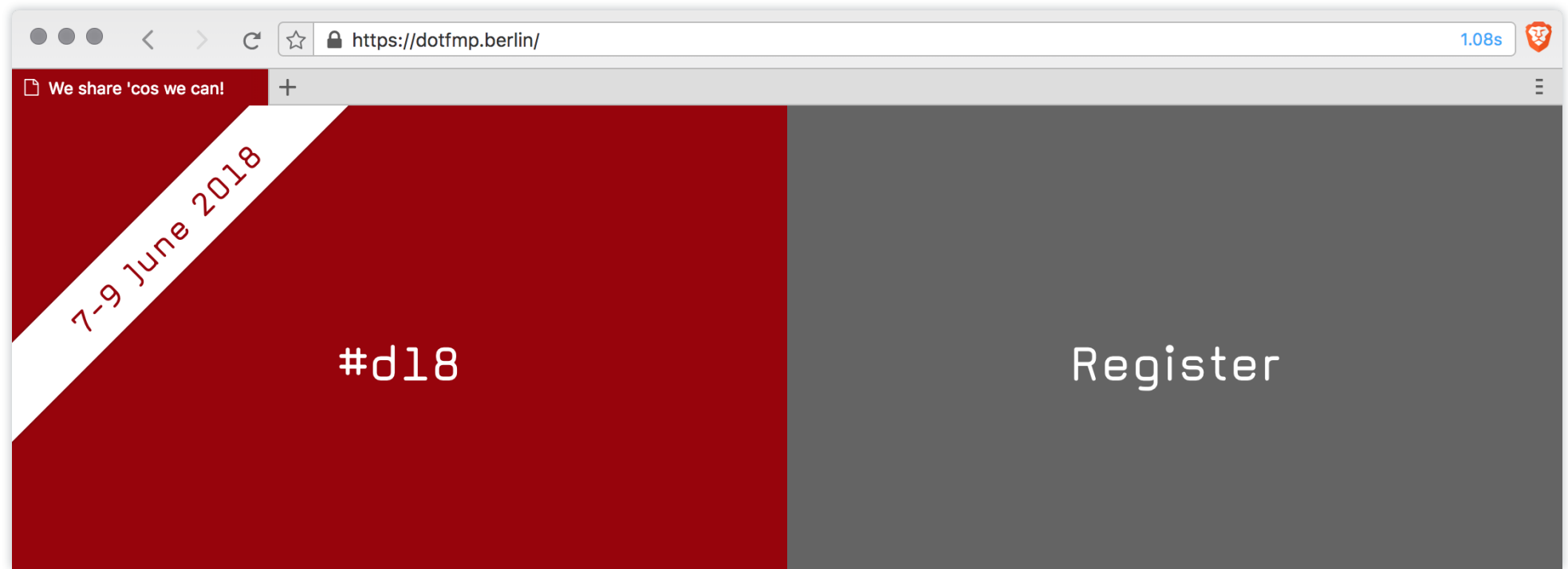
The 6W

Why

We feel there are far too few possibilities to talk to, learn from, and hangout with fellow developers in a relaxed and informal environment. And we'd like to share work and get feedback from people chewing on similar challenges.

(w)how

“Great, I want to join! How do I do that?” – Just head over to dotfmp.berlin/register and FIRST read the prerequisites very carefully! If you are sure you can commit: sign up and be our guest!



The session setup

20 minutes presentation

40 to 60 minutes discussion

Don't get lost in your code

Focus on the core of your topic

Get a moderator*

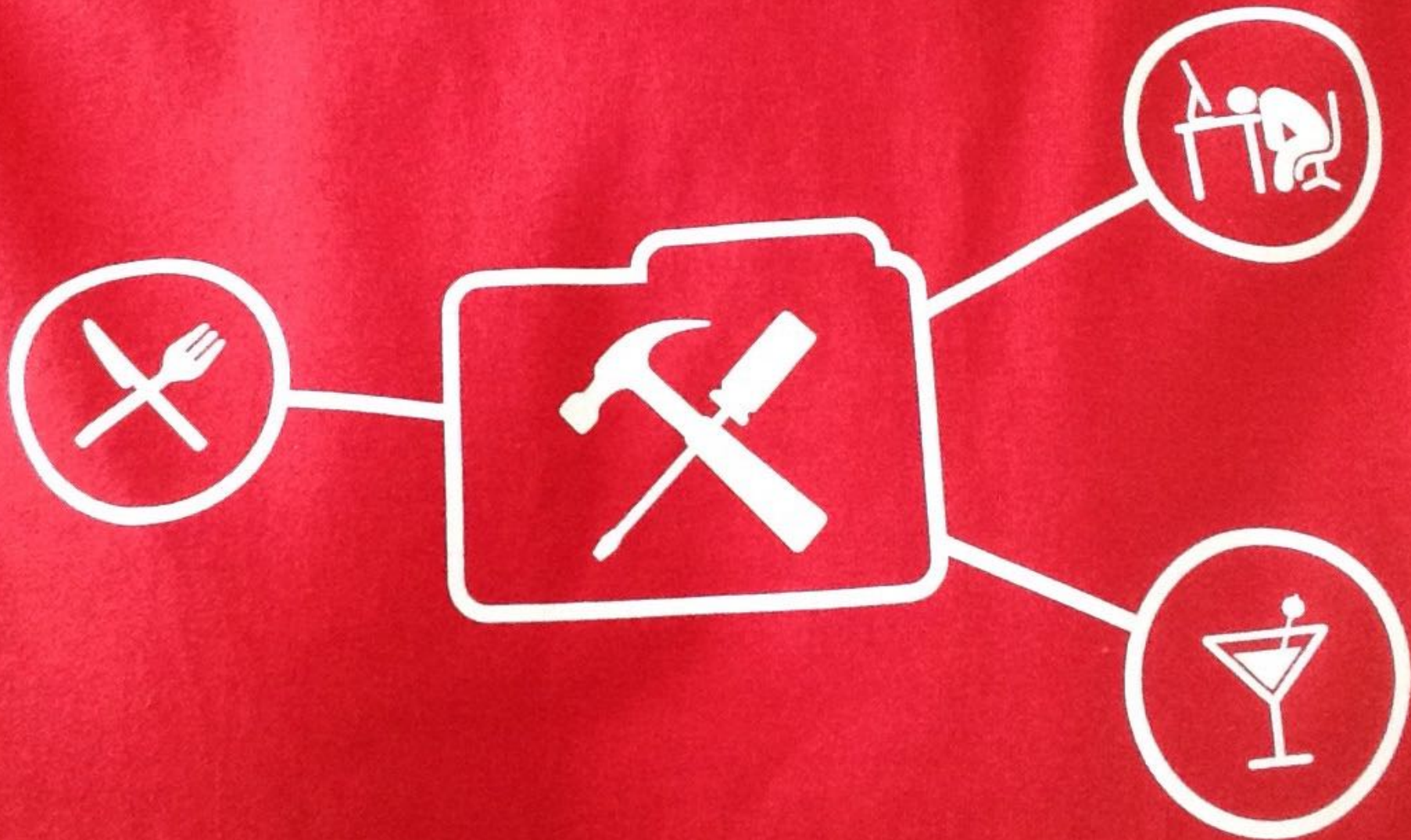
Speakers: DON'T just talk! Ask the audience!

Audience: DON'T just listen! Ask the Speaker!

Add/edit sessions at dotfmp.berlin/schedule or in your account

NO idea what to talk about? **What** has changed in your coding in the last 12 months? **No** changes? **Why**?

* = if no "Room moderator" is available, just ask someone you don't know yet!



The location setup

4 rooms

165 sq m open space

20 MB synchronous DSL connection

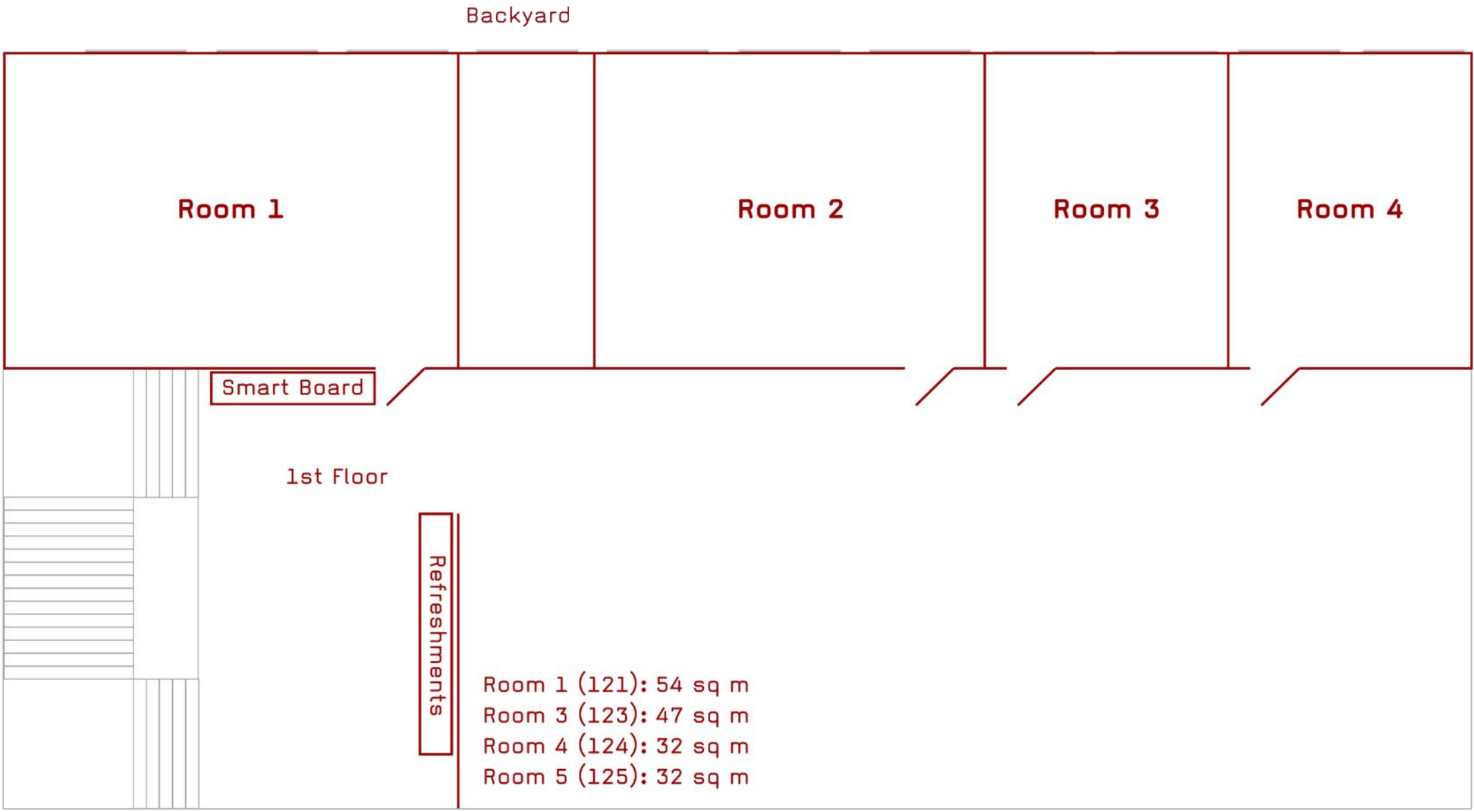
Smartboard showing the website and schedule

Liquid refreshments for free

Food available in-house or just across the street

Recording on demand*

* = to record a session please get in touch by 23 May



Backyard

Room 1

Room 2

Room 3

Room 4

Smart Board

1st Floor

Refreshments

- Room 1 (121): 54 sq m
- Room 3 (123): 47 sq m
- Room 4 (124): 32 sq m
- Room 5 (125): 32 sq m

Kastanienallee

The communication setup

Stream on dotfmp.berlin

Since the plethora of devices and apps and required accounts etc. is leading more and more towards Kleinstaaterei we have decided to have one spot to rule them all!

The Stream is a page on dotfmp.berlin which lists, in chronological order:

- Sessions, they will appear 30 minutes before start.
- Tweets using #d18.
- Instagrams using #d18.
- Mailings sent out from the the admin team.
- ANY note attendees' send to stream@dotfmp.berlin using their registration email.

Each entry can be liked or disliked and appears in the attendees account settings too. A like/dislike “bookmarks” this entry! Liking a tweet in the Stream does not send the like to Twitter!

The Stream can be filtered for various types of content.



The social setup

Beer garden on Wednesday

Starting in a typical German fashion (yes, we follow the cliché/ as cliché as it sounds) we will meet Wednesday from 15:00 in the Prater Beer Garden, Kastanienallee 7-9.

BBQ on Thursday

fmgarage.de are kindly providing the BBQ with “Thüringer Rostbratwurst” and “Thüringer Brätl” in their office yard, just across the street.

BYOI – Bring Your Own Instrument

Don't just focus on FileMaker when you have the chance to be creative in other ways too! If you play an instrument or like to paint, just post a note in the stream and/or look out for others.

Making music on the streets may help to reimburse your travel costs. ;o)

Share a ride

No matter whether you come by car, train or magic carpet, post a note in the stream the day before you arrive! When are you going from where and where to meet you! Sharing a ride in a car or taxi will give you some extra “Karma points”, besides saving money and meeting friends!

WURST :-)



Frische

Reiniges Fleisch	2,00
mit hausgem. köstlicher	
Ketchup o. Mayo	2,30
Schneide Zwiebeln	0,50
Kaffee	1,00 - 1,50
Milch	2,20
Wasser + L.	2,00
Pepsi, Pop usw.	2,20
Arizona Ice Tea	2,80
Café Moka	2,20
Don Pilsener	2,20



Currywurst	2,30
mit Belegen	
Bratwurst	2,-
im Brötchen	
Bohlsch	2,30
mit Belegen	
Four Cheese	2,20
mit Belegen	



Erzeugt vom NEULAND-Verein
für eine gute und umweltbewusste Nahrungsmittelherstellung
Bismarckstr. 11 · 51117 Bonn · Tel. 02 26 7 40 49 40



The luggage setup

Forget!

If you want to enjoy the city and the audience we recommend you don't bring:

- Stress of any kind!
- Any last minute work!
- Phone numbers or Email addresses of your customers!

Don't forget!!!

We recommend to check if you should(n't) leave the following items at home:

- The ideas of what to talk about or whom to meet! Make a list!
- “All Adapters Great and Small”!
- Charger for your devices!
- Sun blocker!
- Any new gadget you bought recently!
- A travel guide! We recommend “111 Places in Berlin that you shouldn't miss” (Edit. 2017)

YOUR ideas and expectations!

Sit down on a coffee and think about what you've experienced in the previous years, what dotfmp means to you, why you want to be there AND what we can improve, in your opinion! Take the time to get prepared! AND share your thoughts with us!



The travel setup

Arrival in TXL

- 1st) Bus 128 (Direction U Osloer Straße, starts there), get off U Kurt-Schumacher-Platz, then
 - 2nd) Subway U6 (Direction Alt-Mariendorf), get off U Naturkundemuseum, then
 - 3rd) Tram M 12 (Direction Pasedagplatz), get off Schwedter Straße
- Takes about 44 minutes
Costs: Individual ticket (Einzelfahrausweis) “AB”, 2,80 EUR.

Arrival in SXF

- 1st) Urban Railway S9 (Direction Spandau), get off S+U Alexanderplatz, then
 - 2nd) Subway U2 (Direction S+U Pankow), get off U Eberswalder Straße, then
 - 3rd) From there a 10 minutes walk, leaving the station in the opposite direction of the train route, cross the streets and turn half right into the Kastanienallee.
- Takes about 56 minutes.
Costs: Individual ticket (Einzelfahrausweis) “ABC”, 3,40 EUR.

For more information about the public transport in Berlin visit: bvg.de

Validate tickets for Bus and Tram: inside the vehicle!

Validate tickets for Subway and Urban Railway: prior to entering, on the platform!

Do NOT enter any public transport without a valid ticket! The fine is 60,- EUR!

Arrival in BER

This will be most unlikely for the next couple of years! :o)



BERLIN AIRLIFT VETERAN

FOR 462 DAYS DURING 1948 AND 1949 THE CITY OF BERLIN WAS KEPT ALIVE BY AN AIR BRIDGE OF ALLIED AIRCRAFT BRINGING FOOD AND OTHER ESSENTIALS FROM THE WEST. THIS C-54 "SKYMASTER" ACTUALLY FLEW DURING THE AIRLIFT. IT WAS LAST FLOWN INTO THE CITY IN 1971 BY COL. GAIL HALVORSEN, THE "CANDY PILOT". THE AIRLIFT, CALLED OPERATION VITTLES BY THE AMERICANS, WAS THE RESULT OF A SOVIET BLOCKADE OF ALL LAND, RAIL AND WATER ROUTES INTO THE CITY. SEVENTY-FIVE MEN LOST THEIR LIVES IN SERVICE OF THE AIRLIFT.



BERLINER

DIE STADT BER
LUFTBRÜCKE
MIT ALLEN LE
DIESE C-54
LUFTBRÜCKE
OBERST GAIL HALV
ALS ERINNERUN
EINGEFLOGEN. DI
DIE BLOCKADE ALL
75 MA
IM D

The travel setup

Arrival in Hauptbahnhof

Tram M10 (Direction S+U Warschauer Str.), get off U Eberswalder Straße.

From there a 8 minutes walk, turn right and cross the street and turn again half right into the Kastanienallee.

Costs: Individual ticket (Einzelfahrausweis) “AB”, 2,80 EUR.

Taxi from TXL

About 26,- EUR

Taxi from SXF

About 40,- EUR

Taxi from Hauptbahnhof

About 18,- EUR

ATTENTION: If the taximeter is not running and/or they ask for more than 26,-/40,- EUR it is most likely an attempt to cheat you! Tell them you will call the police if they did not charge you the correct fare. In any case, ask for a receipt of the fare where the number of the concessionaire must be printed on!

Taxi call: +49-30-261026 or +49-30-443322.

Berlin



Hauptbahnhof



The accommodation setup

Unfortunately we can't offer a discount or special rate on the hotels around.

In the early years we negotiated a “special event rate” but as it turned out, booking via any of the big websites gave a cheaper rate than we ever got, for the same hotel at the same time! In addition only a very small number of people made use of our rate. Therefore we're sorry to say that we stopped doing that!

One way or the other, we recommend booking some of the hotels in the vicinity instead of using Airbnb!

Hotel Kastanienhof

Kastanienallee 65, 10119 Berlin, Phone +49-30-443050

Hotel Jurine

Schwedter Str. 15, 10119 Berlin, Phone +49-30-4432990

The Circus Hotel

Rosenthaler Str. 1, 10119 Berlin, Phone +49-30-20003939

The Circus Hostel

Weinbergsweg 1A, 10119 Berlin, Phone +49-30-20003939



The policy setup

While the majority of the attendees have been to dotfmp.berlin before and therefore know what to expect, we would like to give you a bit of information on our privacy policy and how we welcome all developers to dotfmp.berlin!

Privacy Policy

dotfmp.berlin (“us”, “we”, or “our”) operates <https://dotfmp.berlin> (the “Site”) and “dotfmp.berlin” (the “Event”). We now want to inform you of our policies regarding the collection, use and disclosure of Personal Information we receive or make.

All data provided by the attendees are used only for providing and improving the Site and for Event related activities! By using the Site and attending the Event, you agree to the collection and use of information in accordance with this policy.

- Media Collection and Use

We may take or collect pictures, videos and audio created at the Event. Those media can be used to create any kind of material in relation to the Event. If you do not want to be included in any media, please get in touch before the Event!

- Information Collection and Use

While using our Site, we may ask you to provide us with certain personally identifiable information that can be used to contact or identify you. Personally identifiable information may include, but is not limited to, your name (“Personal Information”).

- Log Data

We collect information that your browser sends whenever you visit our Site (“Log Data”). This Log Data may include information such as your computer’s Internet Protocol (“IP”) address, browser type, browser version, the pages of our Site that you visit, the time

The policy setup

and date of your visit, the time spent on those pages and other statistics. In addition, we may use third party services such as Matomo (previously known as Piwik) that collect, monitor and analyze these data.

- Cookies

Like many sites, we use “cookies” to collect information. You can instruct your browser to refuse all cookies or to indicate when a cookie is being sent. However, if you do not accept cookies, you may not be able to use some portions of our Site.

- Security

The security of your Personal Information is important to us, but remember that no method of transmission over the internet, or method of electronic storage, is 100% secure. While we strive to use commercially acceptable means to protect your Personal Information, we cannot guarantee its absolute security.

- Changes To This Privacy Policy

This Privacy Policy is effective as of 1 March 2018. It will remain in effect subject to any changes we may make in the future. If we make changes to the Privacy Policy they will come into effect immediately after they have been posted on this page.

We reserve the right to update or change our Privacy Policy at any time and you should check this Privacy Policy periodically. Your continued use of the Service after we post any modifications to the Privacy Policy on this page will constitute your acknowledgment of the modifications and your consent to abide and be bound by the modified Privacy Policy.

If you have any questions about this Privacy Policy, please contact us via admin@dotfmp.berlin.

The policy setup

Code of Conduct

This code of conduct outlines our expectations for participants within the dotfmp.berlin community. We are committed to providing a welcoming and inspiring community for all and expect our code of conduct to be accepted. Anyone who violates this code of conduct may be banned from future events.

We strive to:

- Be friendly and patient!
- Be welcoming!

We strive to be a community that welcomes and supports people of all backgrounds and identities. This includes, but is not limited to, members of any race, ethnicity, culture, national origin, colour, immigration status, social and economic class, educational level, sex, sexual orientation, gender identity and expression, age, size, family status, political belief, religion, or mental or physical disability.

- Be considerate!

Your work will be used by other people, and you in turn will depend on the work of others. Any decision you take will affect users and colleagues, and you should take those consequences into account when making decisions. Remember that we're a world-wide community, so you might not be communicating in someone else's mother tongue.

- Be respectful!

Not all of us will agree all the time, but disagreement is no excuse for misbehavior or poor manners. We might all experience some frustration now and then, but we cannot allow that frustration to turn into a personal attack. It's important to remember that a community where people feel uncomfortable or threatened is not a productive one.

The policy setup

- Be careful in the words that we choose!

We are a community of professionals, and we conduct ourselves professionally. Be kind to others. Do not insult or put down other participants. Harassment and other exclusionary behavior aren't acceptable.

- Try to understand why we disagree!

Disagreements, both social and technical, happen all the time. It is important that we resolve disagreements and differing views constructively. Remember that we're different. The strength of our community comes from its diversity and the participation of people from a wide range of backgrounds. Different people have different perspectives on issues. Being unable to understand why someone holds a viewpoint doesn't mean that they're wrong. Don't forget that it is human to err. Blaming each other doesn't get us anywhere. Instead, focus on helping to resolve issues and learning from mistakes.

- Diversity Statement

We encourage everyone to participate and are committed to building a community for all. Although we will fail at times, we seek to treat everyone both as fairly and equally as possible. Whenever a participant has made a mistake, we expect them to take responsibility for it. If someone has been harmed or offended, it is our responsibility to intervene.

If you experience or witness unacceptable behavior – or have any other concerns – please report it by contacting us via admin@dotfmp.berlin. All reports will be handled with discretion.

Imprint

For anything... not only related to dotfmp.berlin, and to avoid any legal mumbojumbo!

Egbert A. Friedrich
Nostitzstraße 28
10965 Berlin

Email: 2018@dotfmp.berlin
Mobile: +49-170-2002332
Twitter: [@dotfmp](https://twitter.com/dotfmp)
FaceBook: [dotfmp](https://www.facebook.com/dotfmp)

YOU ARE LEAVING
THE AMERICAN SECTOR
ВЫ ВЫЕЗЖАЕТЕ ИЗ
АМЕРИКАНСКОГО СЕКТОРА
VOUS SORTEZ
DU SECTEUR AMÉRICAIN
SIE VERLASSEN DEN AMERIKANISCHEN SEKTOR
US ARMY



One more thing

READ!

THE!

FAQ!